



**LAZADA RUN**

**SINGAPORE**

**LAZADA RUN SINGAPORE 2025  
RACE GUIDE**





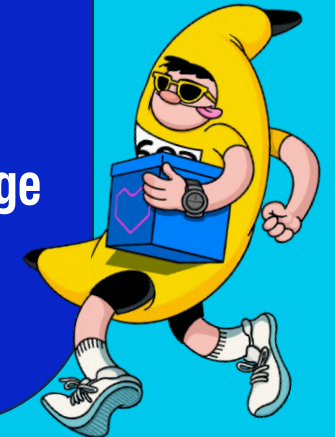
# LAZADARUN

## SINGAPORE



## CONTENT

- About Lazada Run
- Late Race Entry Pack Collection
- Race Details
- Race Route
- Run with our Pacers
- Event Day Programme
- Race Village Activities
- 21.1KM & 10KM Prizes
- POP MART Best Dressed Prizes
- Race Village Map
- Important Race Information
- Things to Note
- Navigate Your Way
- Recommended Mode of Transport
- Getting to the Start Point
- Getting to the End Point | Race Village
- Road Closure Information
- Sponsors & Partners



# ABOUT LAZADA RUN

The Lazada Run 2025, organised by eCommerce platform Lazada, is making a return for its second year. The 2025 edition takes place across six Southeast Asian countries: Vietnam, Indonesia, Thailand, Philippines, Malaysia and Singapore.

The Lazada Run demonstrates Lazada's commitment to enabling and empowering customers to add more to life, starting with fitness. To recreate the joy and excitement of shopping on Lazada, runners will be able to participate in experiential activities from their favourite brands, while enjoying exclusive offers from the start to the finish line.



# LATE RACE PACK COLLECTION

FOR OVERSEAS RUNNERS



<b>PICK-UP DATE</b>	<b>27 JULY (SUN)</b>
<b>PICK-UP TIME</b>	<b>4.00AM - 7.30AM</b>
<b>PICK-UP VENUE</b>	<b>EVENT INFORMATION BOOTH (START POINT) KALLANG CARPARK 1 (NEAR DECATHLON)</b>



## Letter of Consent and Indemnity Agreement

For participants below the age of 18 as of 27 July 2025, it is compulsory to have a Letter of Consent and Indemnity Agreement signed by your parent/guardian and submitted during the Race Entry Pack Collection.

**\*Please collect your race pack at least 45 minutes before your category flag -off, as queues are expected.**

*Note: There will be no further late collection arrangement after the event.*



# RACE DETAILS

## RACE INFORMATION



<b>EVENT DATE</b>	<b>27 JULY, SUNDAY</b>
<b>EVENT TIME</b>	<b>4.00AM – 11.00AM</b>
<b>EVENT START POINT</b>	<b>KALLANG CARPARK 1, 200 STADIUM BOULEVARD</b>
<b>EVENT FINISH POINT</b>	<b>MARINA BARRAGE</b>



*Please note the Start and Finish Points are at 2 different locations.*

# RACE DETAILS

## RACE FLAG-OFF & CUT-OFF TIMINGS

\*Please note that flag-off timings are subject to change.  
We recommend checking for updates closer to the event date for the most accurate schedule.



**21.1KM**  
**5.00AM\***

COMPLETE WITHIN  
**4 HOURS**



**10KM**  
**6.30AM\***

COMPLETE WITHIN  
**2HR30MIN**



**5KM**  
**7.30AM\***

COMPLETE WITHIN  
**1HR30MIN**





START  
START PEN

STADIUM CRESCENT

TO START PEN

VIP

LAZADA RUN  
RACE VILLAGE

KALLANG CARAPARK 1

TO BAG DEPOSIT

JLN BENAAN KAPAL

JLN BENAAN KAPAL

KFC/Mcdonalds

DECATHLON  
(OPENS 3AM)

# LEGEND

- Information/  
Late Race Pack Collection
- Photowall
- Toilets
- First Aid Point
- Pre-Purchased  
Bag Deposit
- Site Hydration

## START POINT SITE MAP KALLANG CARPARK 1

Note: Map not drawn to scale and is subject to change



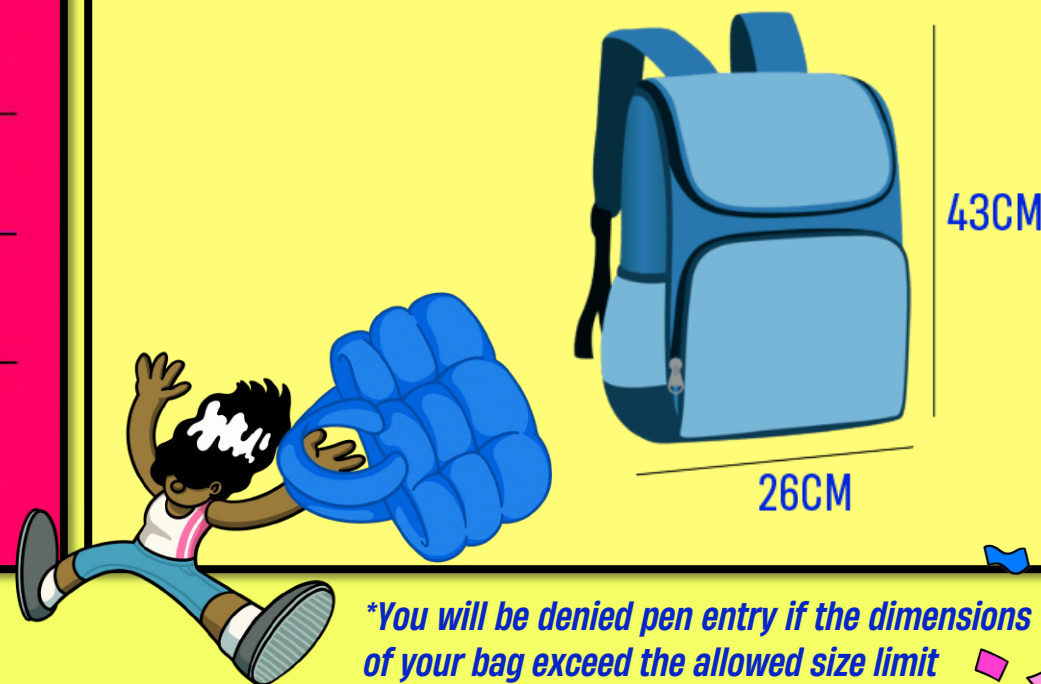
# START PEN INFORMATION



CATEGORY	PEN OPENING	PEN CLOSURE
21.1KM	4.30AM	5.30AM
10KM	6.00AM	6.45AM
5KM	7.00AM	7.50AM
POP MART 5KM	7.15AM	7.50AM

*\*There is no dedicated pen entry for participants. We encourage you to arrive early should you wish to gain access to the front of the wave start.*

## PEN ENTRY BAG SIZE LIMIT



*\*You will be denied pen entry if the dimensions of your bag exceed the allowed size limit*



# PRE-PURCHASED BAG DEPOSIT

CATEGORY	BAG DEPOSIT CUT-OFF TIME (KALLANG CARPARK 1)	BAG RETRIEVAL ESTIMATED TIME (MARINA BARRAGE)
21.1KM	5.15AM	5.45AM
10KM	6.45AM	7.30AM
5KM / POP MART 5KM	7.45AM	8.15AM

*\*Retrieval Timings are indicative.*



**Bib Image for Reference:**  
If you have pre-purchased the Bag Deposit service during registration, you will see 'BAGGAGE' on your race bib.

*\* You are allowed 1 X bag, no more than A3 size*

*\*The organiser reserves the right to deny your bag deposit should it not meet the requirements.*

**DID NOT PURCHASE BAG DEPOSIT?**

Approach the info booth to purchase a slot @ \$10 if you wish to deposit your bag.

Payment Mode: CASH/ PAYNOW / PAYLAH







**ONLY FOR RUNNERS OF LAZADA RUN 2025, YES YOU!**

Step Into Savings: Enjoy

TILL  
31<sup>ST</sup> AUGUST ONLY!

**25%<sup>OFF</sup>**

all items at our Brooks store on Lazmall.  
Minimum spend of \$50

Code: BRSGLAZMALL25OFF

**SCAN HERE**



gear  
crew  
VIBES



# LAZADARUN

## SINGAPORE



# LAZADARUN

## SINGAPORE



**START VENUE – KALLANG CARPARK 1**  
**END POINT – MARINA BARRAGE**

**10KM**  
**6.30AM\***

**COMPLETE WITHIN**  
**2HR30MIN**

## LEGEND



**DISTANCE  
MARKERS**



**10KM ROUTE**



**HS1**



**HYDRATION  
STATION**



**RS1**



**REFUEL  
STATION**

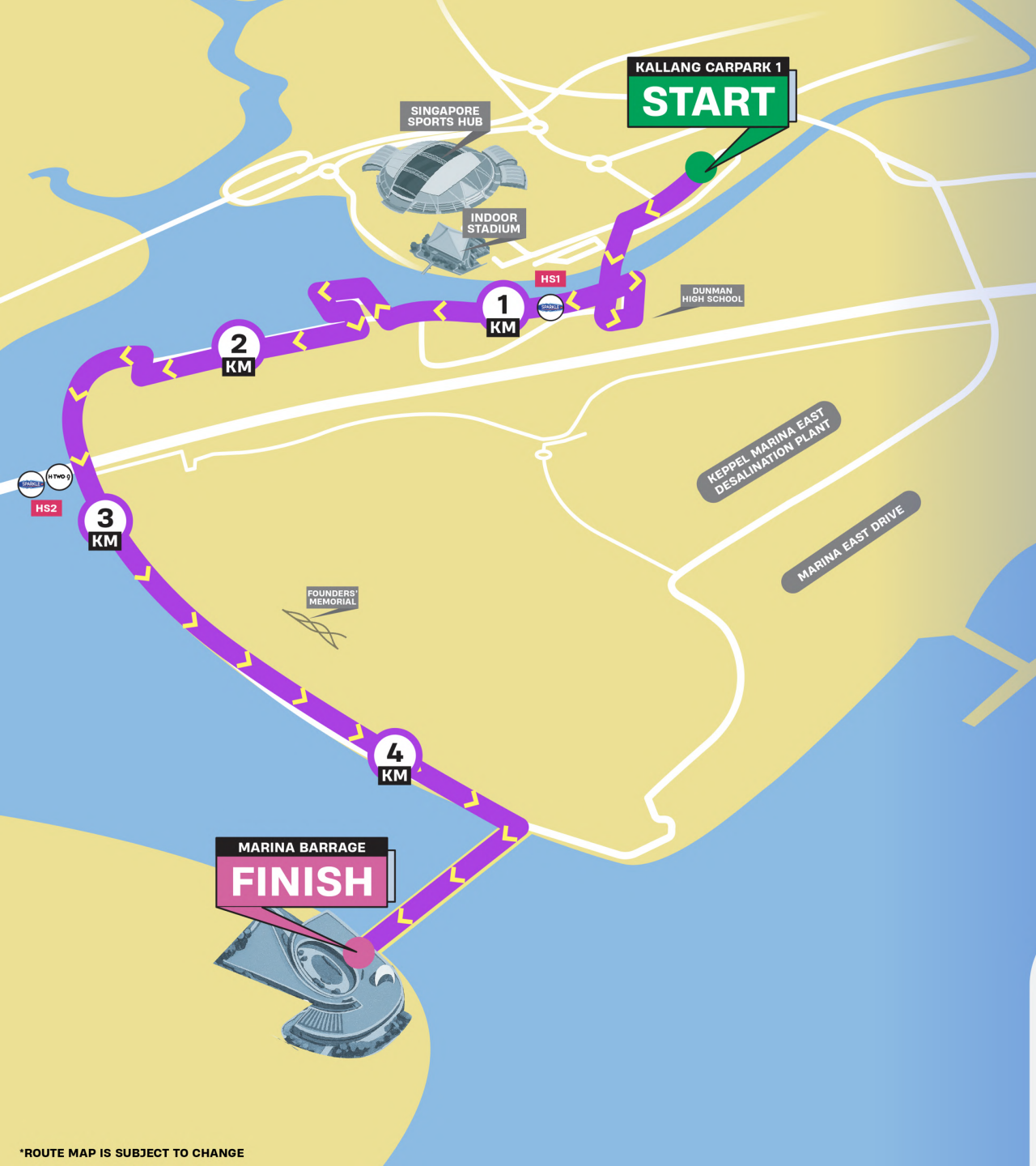


**10KM**  
**ROUTE MAP**



# LAZADARUN

## SINGAPORE



**START VENUE – KALLANG CARPARK 1**  
**END POINT – MARINA BARRAGE**

**5KM**  
**7.30AM\***

**COMPLETE WITHIN**  
**1HR30MIN**

## LEGEND



**DISTANCE MARKERS**



**5KM ROUTE**



**HS1**



**HYDRATION STATION**



**RS1**



**REFUEL STATION**



**5KM**  
**ROUTE MAP**

REFRESH  
WITH  
H-TWO-O  
AT THE  
FINISH  
LINE



H-TWO-O

325ML  
H-TWO-O  
SPARKLING HYDRATION  
ISOTONIC DRINK



325ML  
PINK DOLPHIN  
PEACH FLAVOURED  
SPARKLING VITAMINISED  
DRINK

VITAMIN  
VIBES  
ONLY  
AT OUR  
BOOTH



# RUN WITH OUR PACERS



Lazada  
**LAZADARUN**  
SINGAPORE

Tackling the 10KM and Half Marathon with a specific race completion timing in mind? Look out for our Official Pacers from Running Department, and join one of the Pacer groups to ace your run. The pacers of each Pacer group can be identified by the different coloured helium balloons that will indicate the targeted finishing time.

Let them be your inspiration and motivation when the going gets tough!

## ABOUT RUNNING DEPARTMENT

















**RUNNING  
DEPARTMENT**



*Founded in 2013, Running Department is a no-frills Singapore based running community fueled by runners with a strong passion for running. They are not your usual running club or team, but a community that welcomes runners of all ages and walks of life to come together to train and support one another. Whether you're a slow or fast runner, doing your first full marathon or just looking for a community to bond with, be sure to take the first step by joining them for a feel-good run!*



# RUN WITH OUR PACERS

CATEGORY	PACE GROUP	BALLOON COLOUR	CATEGORY	PACE GROUP	BALLOON COLOUR
 <p><b>21.1KM COMPETITIVE RUN</b></p>			 <p><b>10KM COMPETITIVE RUN</b></p>		
					
					
					

# EVENT DAY PROGRAMME

TIME	PROGRAMME	LOCATION
4.00AM	Information, Bag Deposit Late Race Pack Collection Opens	Kallang Carpark 1
5.00AM	21.1KM Half Marathon Flag-Off	Kallang Carpark 1
6.12AM	Expected 1 <sup>st</sup> Finisher for 21.1KM Half Marathon Run	Marina Barrage
6.30AM	10KM Flag-Off	Kallang Carpark 1
7.00AM	Race Village Opens Cart Dash Challenge Starts	Marina Barrage
7.06AM	Expected 1 <sup>st</sup> Finisher for 10KM Competitive Run	Marina Barrage
7.30AM	5KM Run Flag-Off	Kallang Carpark 1
7.35AM	Lazada X POP MART 5KM Flag-Off	Kallang Carpark 1
7:45AM	Prize Presentation – 21.1KM Half Marathon Run Top 3 Male & Female	Marina Barrage
8.00AM	Stage Games	Marina Barrage
8.15AM	Prize Presentation – 10KM Competitive Run Top 3 Male & Female	Marina Barrage
8.30AM	Mass Fitness Workout by Health Promotion Board	Marina Barrage
9.00AM	Prize Presentation – POP MART Best Dressed Top 3 Winners	Marina Barrage
10.00AM	Event Ends	Marina Barrage





# RACE VILLAGE ACTIVITIES

## SPONSORS

**BROOKS  
HUAWEI  
YEO'S  
SUNPRIDE**

## SPECIAL PARTNER

**POP MART**

In addition to beating your own personal bests, your Lazada Run Singapore 2025 experience does not end at the finish line. Enjoy an array of exciting experiences lined up at the race village and look out for the photo opportunities!

## PARTNERS

Fitbar  
Himalaya Sports Candy  
Lancaster  
Loacker  
Rokeby  
Woods'

## OTHER ACTIVITIES

Photo Opportunities  
Cart Dash  
Medal Engraving  
Yokoprints  
ActiveSG  
10-Min FitCheck!  
Mass Fitness Workout

# COMPETITIVE RUN PRIZES

## CASH & PRODUCT



	21.1KM MALE/FEMALE	10KM MALE/FEMALE
<b>1st Place</b>	\$1500	\$1000
<b>2nd Place</b>	\$1000	\$500
<b>3rd Place</b>	\$500	\$250



### FOR SINGAPOREANS AND PR ONLY

\*Cash prizes will be awarded only to the top 3 Singaporeans or Permanent Residents (PRs) in each race category.  
 \*Winners will be required to present valid proof of identification to verify eligibility.



**1st Place FIT 4 PRO**



**2nd Place / 3rd Place FIT 4**

**SPONSORED BY: HUAWEI**





## Special Treats from Huawei for All Lazada Runners!



**Scan to get \$10 OFF for ALL HUAWEI Products  
(no min. spend)!**

\* Vouchers is exclusive to Lazada Run participants and available from 27 July to 26 August 2025, or till stocks last. T&Cs apply.

# POP MART BEST DRESSED CONTEST – WIN ADORABLE COLLECTIBLES!

Dress to impress at Lazada Run Singapore and stand a chance to win exclusive POP MART collectibles! Whether you're cute, quirky, or creatively themed, our judges will be on the lookout for the most stylish participants.

*Bring your fashion A-game – the cuter, the better!*

## 1st Place

Flip with Me  
Soft Vinyl Plush Doll



## 2nd Place

Singapore Exclusive  
Merlion Labubu



## 3rd Place

THE MONSTER Big into Energy  
Series (Random 1 Box)





# LAZADARUN

SINGAPORE

VIP



S1

S2

S3

S4

S5

S6

S7

S8

STAGE

CART DASH

LEVEL 2  
ROOF A & B

TO FINISH

LEVEL 1  
CENTRAL COURTYARD

BAGGAGE RETRIEVAL / EXIT

FINISH

To AWA 2

To AWA1

RACE VILLAGE ROOF D

RACE VILLAGE ROOF A & B

AWA 2

AWA 1



POP MART  
ENTITLEMENTS  
COLLECTION

ROOF D

## LEGEND



Hydration and Banana



Medal



21.1km Finisher Shirts



Information



Photo Points



Toilets



First Aid Points



Baggage Retrieval



Site Hydration

## SPONSORS & PARTNERS

S1. Lancaster

S5. Sunpride

S2. Fitbar

S6. Huawei

S3. Himalaya Sports  
Candy

S7. Brooks

S4. Yeo's

S8. POP MART

P1. Rokeby

P5. YokoPrints 3D

P2. ActiveSG

P6. Running

P3. 10-Min FitCheck!

Department

P4. Medal Engraving

# FINISII POINT SITE MAP

## MARINA BARRAGE

Note: Map not drawn to scale and is subject to change





Official Fruit Partner of  
Lazada Run 2025

# Don't Say Bo Jio Sunprise Bananas Are Here

Fuel up at Lazada Run 2025  
with fresh  
Cavendish Bananas



Run Further,  
Recover  
Faster!



# IMPORTANT RACE INFORMATION

1. Please read the Lazada Run Event Guide in its entirety.
2. You must bring along your race bib on race day. You must pin your race bib on the front of your race singlet with the safety pins provided, or use a running belt. Please do not fold, cut or alter your race bib in any way. You will also need to produce your race bib to enter the Start Pen. If you have misplaced your race bib, please proceed to the Information Booth near to the start line to request for a replacement (replacement fee applies).
3. It is strictly prohibited for another person to race under your name or for you to race under another person's name for a number of reasons, but most importantly it is the danger and confusion it will impose in the event of an incident during the race.
4. Familiarise yourself with the race course – it is your responsibility to know this on race day.
5. Arrive at least one hour ahead of your flag off time to avoid congestion. Please take note of start pen closure timings.
6. If you are feeling unwell at any time during the race, please do not continue with the run and approach our crew for assistance. There are medical posts and paramedics along the course to provide assistance should you require it during the race. Any admission to hospital or treatment provided by medical services other than the event medical team, will incur costs to the participants.
7. Keep to your left to allow faster runners to overtake. If you encounter runners moving at a slower pace on the right side of the lane, please call out, "On your right." Please be courteous and move to the left when you hear this!
8. Help everyone enjoy a clean & green race! Please be responsible and throw your empty cups and trash into the bins provided.



# THINGS TO NOTE

## RACE BIB

You must bring along your race bib on race day and pin your race bib on the front of your race singlet with the safety pins provided, or use a running belt. Please do not fold, cut or alter your race bib in any way. You will also need to produce your race bib to enter the Start Pen.

It is strictly prohibited for another person to race under your name or for you to race under another person's name for a number of reasons, but most importantly it is the danger and confusion it will impose in the event of an incident during the race.



*A fee of \$30 will be charged to participants for a replacement race bib on event day. For POP MART 5km Category, a fee of \$50 will be charged for a replacement race bib.*

## BAG SIZE RESTRICTION

Runners are advised to travel light and refrain from bringing dangerous items such as scissors, pen knives, multi-tool pocket knives, batons or any object that can be deemed as weapons. Runner will be required to surrender such items and authorities will be able to deny entry to any runner flouting such rules.

Please note the maximum bag size allowed for the race is 26cm X 43cm. If your bag is beyond this size, you will not be allowed entry to the start pen and will be required to purchase the Bag Deposit service.

## DISTANCE MARKERS

Distance markers will be placed at every kilometre along the run route so you know when to push the pace!

## HYDRATION & REFUEL STATION

There will be hydration / aid stations located approximately every 2-3 KM. Bananas and Snack Bar will be available for 21.1KM and 10KM runners along the course. Please keep a lookout for the refuel stations.

## MEDICAL

The start point and race village will have medical personnel in position to provide assistance if you feel unwell or are injured. There will be static/roving medical posts and paramedics along the race course to provide assistance should you require it during your race. You may also contact our medical hotline at 88308655/88824393 should you require any assistance.





## THINGS TO NOTE

### BAG DEPOSIT SERVICE

Paid baggage deposit service is available at the start point from 4:00AM and limited to 1 item per participant. Baggage deposit will close 15 minutes after flag off (by category).

This service is chargeable at \$10 if purchased during Event Day.

You will collect your bag at the finish point located at Marina Barrage. Please travel light and only bring what is necessary.

Bags may be subjected to checks by security officers. The race organizer reserves the right to decline bag deposits.



### MEDAL & FINISHER TEE

Every runner who crosses the Finish Line within the stipulated cut-off timings of your race category will receive a Medal specific to your race category.

21.1KM Half Marathon finishers who complete the race within the cut-off timing of 4 hours can collect their exclusive Half Marathon Finisher's Tee when they cross the Finish Line.

Both the Medal (for all categories) and Finisher Tee (Half Marathon) can only be collected at the event. There will be no mailing of either items after Race Day so do remember to pick up your entitlement(s) and wear it with pride!



### RACE RESULTS

Check your results online at:  
<https://www.sportsplits.com/races/lazada-run-singapore-2025>

This is available approximately 48 hours after the race.

### DISPUTE OVER RESULTS

In the event of a dispute over race results, an appeal must be lodged at the Race Village Information Tent 20 minutes before the start of each category's prize presentation. A non-refundable S\$50 administration fee will be charged per appeal. In the event of a dispute, the Race Organizer's decision is final.



# THINGS TO NOTE

## POP MART ENTITLEMENTS

Participants of the Lazada Run x POP MART 5KM Category may collect their exclusive POP MART entitlements upon completion of the race. The POP MART Race Bib is required for Verification.

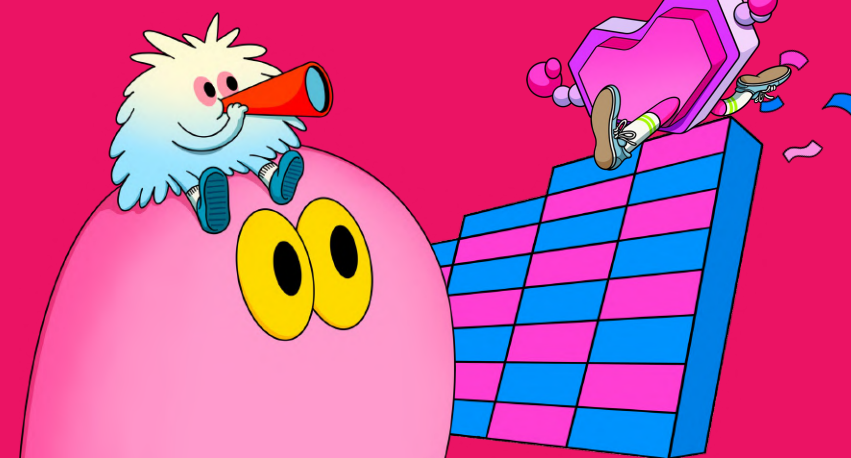
The medal and POP MART entitlements can only be collected at the event. There will be no mailing of either items after Race Day so do remember to pick up your entitlement(s) at the POP MART tent.



## LOST & FOUND

If you have lost or found an item, please approach the Information Tent.

At the end of the event, found items will be transported to the Race Organizer's office. If you have lost an item, it is your responsibility to contact the Race Organizer at [contact@infinitus.asia](mailto:contact@infinitus.asia) with a description and to pay for its return to you. Unclaimed items will be discarded one month after the race date.





# NAVIGATE YOUR WAY

## ACTIVITY

## LOCATION

START POINT

LATE RACE PACK COLLECTION

BAG DEPOSIT

*\*FOR RUNNERS WHO PURCHASED BAG DEPOSIT ONLY*

BAG RETRIEVAL

FINISH POINT

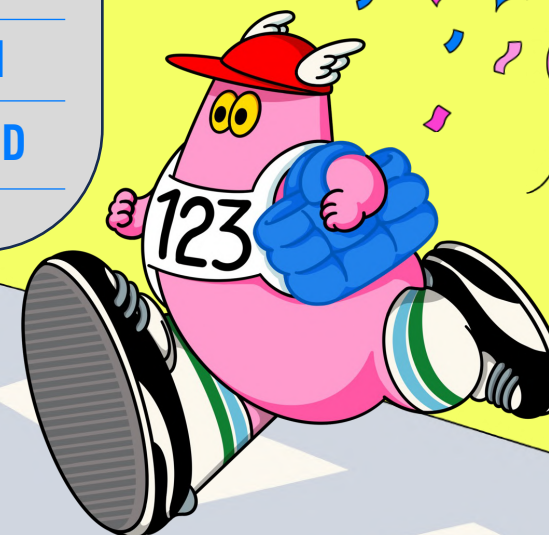
RACE VILLAGE

Kallang Carpark 1  
200 Stadium Boulevard

Marina Barrage – Central Courtyard

Marina Barrage – Central Courtyard

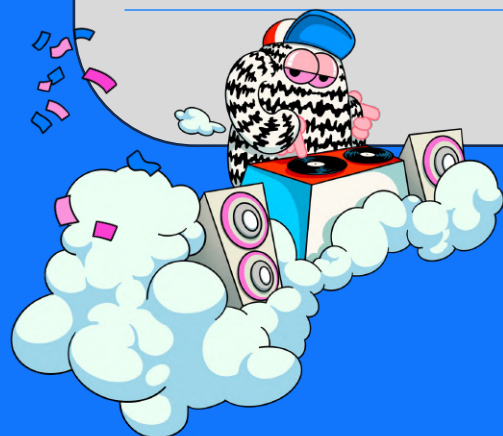
Marina Barrage – Green Roof A, B & D



# RECOMMENDED MODE OF TRANSPORT

CATEGORY	FLAG-OFF TIME	RECOMMENDED TRANSPORT MODE	REMARKS
21.1KM	5.00AM	<u>Bus Service</u> Shuttle bus service by Share Transport	<a href="https://www.sharetransport.sg/Buspools#/app/routes/event-section">https://www.sharetransport.sg/Buspools#/app/routes/event-section</a>
10KM	6.30AM		
5KM	7.30AM	<u>MRT Train Service</u> Mountbatten MRT Station (EXIT B)	<a href="https://www.smrt.com.sg/public-transport/train-information/network-map/">https://www.smrt.com.sg/public-transport/train-information/network-map/</a>
POP MART 5KM	7.35AM		

*\*Parking is limited at both Kallang Carpark 1 and Marina Barrage*





# GETTING TO THE START POINT

## VENUE

Kallang Carpark 1 | 200 Stadium Boulevard, Singapore 397081  
The event venue is within walking distances of the Singapore Sports Hub.

### BY CAR

Limited parking is available at Kallang Carpark and its vicinity. Runners are strongly encouraged to purchase the Shuttle Bus Tickets [here](#) or utilise public transport to get to the race venue.

### BY MRT

You may travel to the Start Point via the Circle Line and alight at the Mountbatten MRT Station (Exit B).

Please check train service operational hours here:  
[https://journey.smrt.com.sg/journey/station\\_info/admiralty/first-and-last-train/](https://journey.smrt.com.sg/journey/station_info/admiralty/first-and-last-train/)

### BY SHUTTLE BUS SERVICE

Shuttle bus service by Share Transport will run from selected bus stops near MRT stations to the race site at Marina Barrage, in the morning of 27 July.

Tickets are priced at \$12.00 and can be purchased via the ShareTransport App.

See this link for more information:  
<https://www.sharetransport.sg/Buspools#/app/routes/event-section>

Grab your tickets now before it's sold out!



**\*HIGHLY RECOMMENDED FOR 21.1KM HALF MARATHON & 10KM RUNNERS**

# GETTING TO THE START POINT

## VENUE

Kallang Carpark 1 | 200 Stadium Boulevard, Singapore 397081  
The event venue is within walking distances of the Singapore Sports Hub.

## BY TAXI / HAILING APPS

Due to expected heavy traffic, runners are strongly encouraged to ride pool. For all other timings, runners are encouraged to purchase shuttle bus tickets or take a train.

OPERATORS	WEBSITE
CDG TAXI	<a href="http://www.cdgtaxi.com.sg/">http://www.cdgtaxi.com.sg/</a>
PRIME TAXI	<a href="http://www.primetaxi.sg">www.primetaxi.sg</a>
STRIDES PREMIER TAXI	<a href="http://stridespremier.com.sg">stridespremier.com.sg</a>
TRANS-CAB	<a href="http://www.transcab.com.sg">www.transcab.com.sg</a>

RIDE-HAILING
GRAB
GOJEK
RYDE
TADA



# GETTING TO END POINT / RACE VILLAGE

## VENUE

Marina Barrage | 8 Marina Gardens Drive, Singapore 018951

The event venue is within walking distances of the Gardens by the Bay and Marina Bay Sands.

## BY CAR

Limited parking is available at Marina Barrage and its vicinity due to carpark operating hours.

Satay by the Bay Car Park will only start operating at 5.00AM.

Alternative carparks are available at Main Entrance, The Meadow and Bayfront Plaza of Gardens by the Bay with car park opening hours from 5.00AM. Please visit [here](#) for more information.

## BY MRT

You may travel to Marina Barrage via the Thomson-East Coast Line and alight at the Gardens by the Bay MRT Station (Exit 1).

Please check train service operational hours here:  
[https://journey.smrt.com.sg/journey/station\\_info/admiralty/first-and-last-train/](https://journey.smrt.com.sg/journey/station_info/admiralty/first-and-last-train/)



# ROAD CLOSURE INFORMATION

ROAD	CLOSED LANE OR CARRIAGEWAY CLOSURE	CLOSURE TIMING (27 JULY, 2025)
Stadium Crescent towards Stadium Blvd and Stadium Way	Road closure	2.00AM – 9.30AM
Jln Benaan Kapal between Stadium Crescent and Mountbatten Rd	Road closure	2.00AM – 9.30AM
Stadium Way towards Tanjong Rhu Rd	Leftmost Lane	4.00AM – 9.30AM
Stadium Walk towards Stadium Crescent – From LP19A to Stadium Crescent	Carriageway Closure	4.00AM – 9.30AM
Tanjong Rhu Rd towards Fort Rd – Between LP4 and LP 32F	Leftmost Lane	4.00AM – 9.30AM
Kampong Arang Rd towards Sampan Place – From Tanjong Rhu Rd to Sampan Place	Carriageway Closure	4.00AM – 9.30AM
Sampan Place towards Kampong Kayu Rd	Carriageway Closure	4.00AM – 9.30AM
Kampong Kayu Rd towards Mountbatten Rd – From Sampan Place to LP6	Carriageway Closure	4.00AM – 9.30AM
Stadium Walk towards Stadium Blvd – From Stadium Way to LP19A	Conversion to 2-way Traffic	4.00AM – 9.30AM
Kampong Arang towards Tanjong Rhu Rd – From Sampan place towards Tanjong Rhu Rd	Conversion to 2-way Traffic	4.00AM – 9.30AM
Rhu Cross – Between LP 15 & LP 18	Road Closure	4.30AM – 8.30AM
East Coast Park Service Rd – Between Marina East Drive & CP B2	Road Closure	4.30AM – 10.30AM
Marina East Drive	Road Closure	4.30AM – 11.00AM



# SPONSORS & PARTNERS

**EVENT ORGANISER**

infiniJus

**SPECIAL PARTNER**

POP MART

**OFFICIAL SPONSORS**



H-TWO-0



United Square  
the learning mall

**PARTNERS**

Fitbar



LANCASTER  
MONACO



ROKEBY™

TRULY  
NUTS!

WOODS'

